



## Model 2094 Remote Control

Used in a twin engine two-station system, Model 2094, the Remote Control for 2092, is of the same rugged design as the main control, which is made of die cast silicon bronze and stainless steel hardware and is backed with our usual warranty. This head, while slightly narrower than the 2092 master control, comes with all the hardware necessary to mount the interconnecting cables.

The cable used to interconnect the control heads or stations (2092-2094) must be pull-pull cables known as the 47 series cables.

The push-pull control cable between the main station 2092 and the clutch and throttle should be connected before the interconnecting pull-pull cable is installed.

### Letter Code Designation:

- K – with chrome finish cover and handle
- L – with polished brass finish cover and handle
- M – with black epoxy finish cover and chrome handle
- U – curved handle
- V – T-bar handle with black plastic grip
- X – short handle
- Y – T-bar handle
- Z – with riveted metal labels

### Example:

2094-KYZ is a single engine remote control with chrome finish, T-bar handle and riveted label.

**NOTE:** Two cables per engine are required for interconnecting the master (model 2092) and remote control (model 2094). These 47 series pull-pull cables are available in even foot lengths.

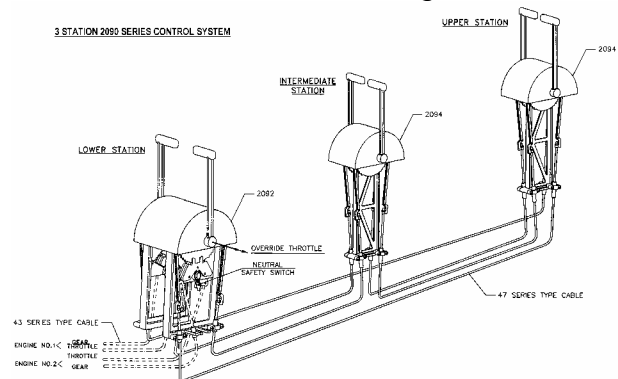
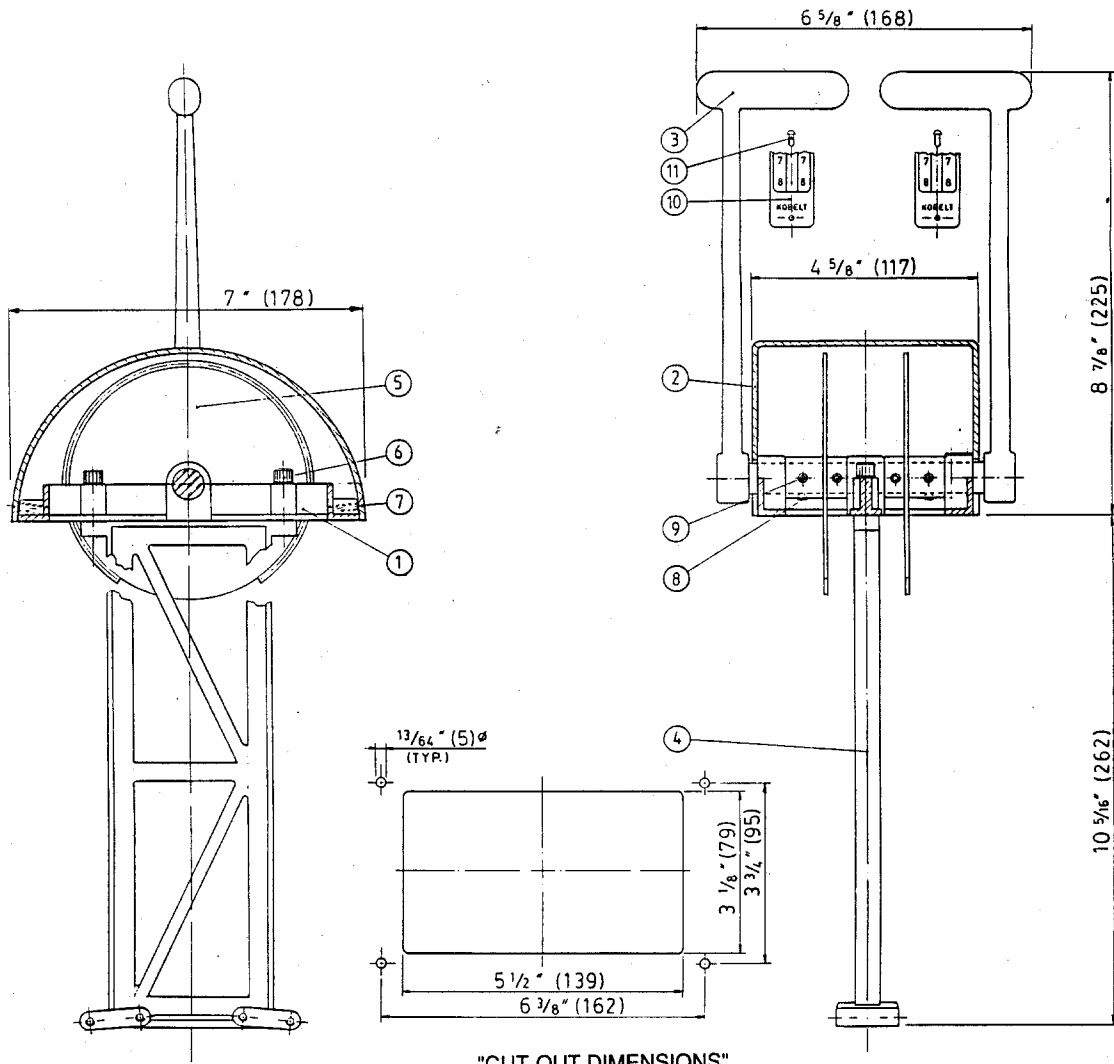


Diagram showing cable connection between stations.

# MODEL 2094



"CUT-OUT DIMENSIONS"

All dimensions in inches (mm)

Item	Quantity	Part Number	Description
1	1	2012-0001	Frame
2	1	2012-0002	Dome
3	2	2011-0003	Handle (T-bar)
4	1	2093-0001	Support
5	2	2093-0002	Sprocket
6	2	1002-1020	Hex Socket Hd Cap Screw
7	2	1011-0808	Oval Hd Mach. Screw
8	2	1016-0804	Hex Socket Set Screw
9	4	1024-0816	Spring Pin
10	2	2050-0226	Label
11	4	1032-0304	Rivet