

## MODEL 4107 THROTTLE ACTUATOR

The 4107 Throttle Actuator is used in conjunction with pressure control heads to provide fast, accurate positioning of low and medium force mechanisms. Input pressure acts on a rolling diaphragm and against a spring, producing lever position output corresponding to the input pressure. The output lever is provided (threaded rod) with two jam nuts on either side of the output linkage which permits infinite stroke selection. This arrangement is ideally suited for multi-engine installations with a single source of control air pressure. The fine adjustment of the linkage will allow throttle adjustment for load equalization (not an automatic load share). This cylinder also features a manual override. This allows the engineer to operate the throttle actuator if there is no air supply. It can be done without having to disconnect any part of the linkage from the actuator.

Weight: 6 lb. (2.7 kg)

Material: Die cast silicon bronze and stainless steel hardware

Max. Input Pressure: 125 psi (8.6 bar)

Operating Temp. Range: -40°C to +90°C

Pipe Port Size: ¼" NPT

Max. Stroke: 3½" (89 mm)

Stroke as Linear Activator: 1" (25 mm)

### APPLICATIONS

For accurate positioning and control of governors, throttles and valves

Used anywhere where low and medium force positioning is required.

### ORDERING INFORMATION

Model Designations:

U - 10-80 psi input pressure range

R - 0-100 psi input pressure range

Other ranges are available on request

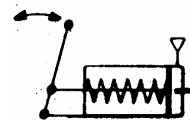
The standard model 4107 is supplied as follows:

- i. With adjustable stops and linkage
- ii. With 10-80 psi pressure range

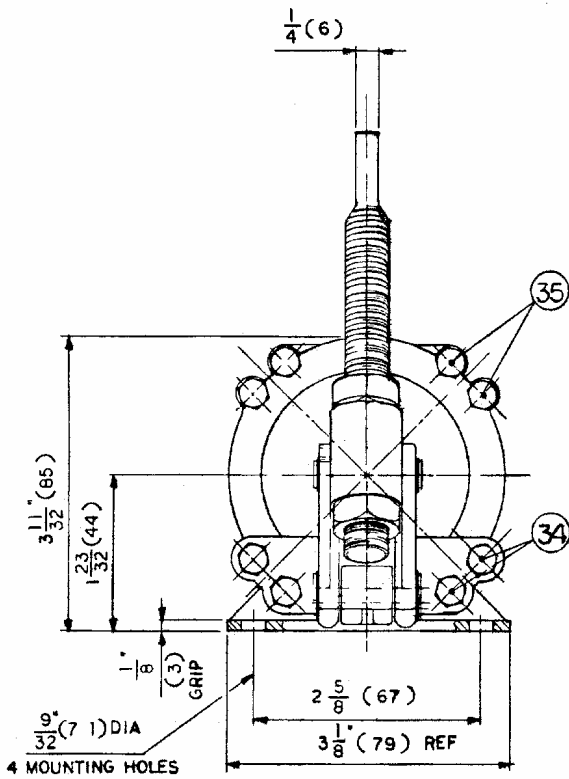
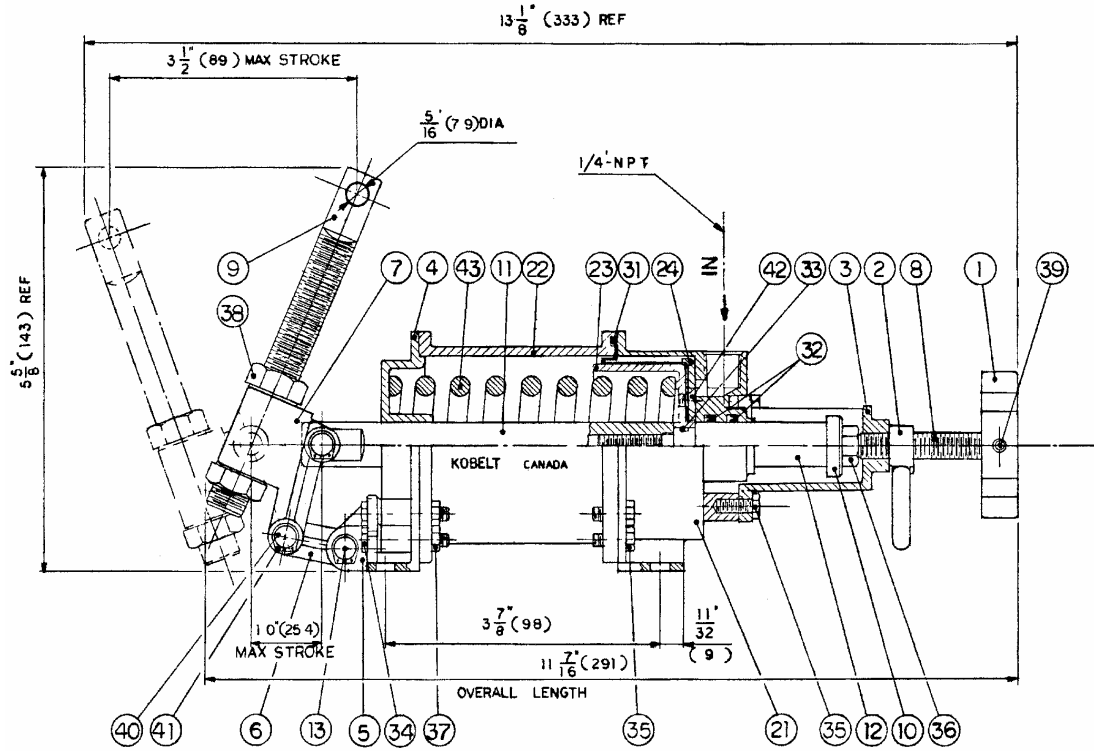
To order, state model number followed by the desired Model Designation letter code.

Example: Standard 4107 with 10-80 psi pressure range, ordering number is *4107-U*

### SCHEMATIC SYMBOL



# MODEL 4107



All Dimensions in inches (mm)

Item	Qty	Part Number	Description
1	1	4107-0001	Knob
2	1	4107-0002	Locking Lever
3	1	4107-0003	Knob Bracket
4	1	4107-0004	Front End Cap
5	1	4107-0005	Linkage Mounting Bracket
6	1	4107-0006	Linkage
7	1	4107-0007	Output Link
8	1	4107-0008	Knob Screw
9	1	4107-0009	Adjustable Lever
10	1	4107-0010	Stop
11	1	4107-0011	Flat End Shaft
12	1	4107-0012	Rear End Shaft
13	1	4107-0013	Solid Pin
21	1	4221-0001	End Cap
22	1	4221-0002	Cylinder Housing
23	1	4221-0003	Piston
24	1	4221-0004	Diaphragm Retainer Plate
31	1	1104-2004	Diaphragm
32	2	1102-0006	"U" Cup
33	1	1101-0012	"O" Ring
34	4	1001-0820	Hex Hd Capscrew
35	15	1001-0808	Hex Hd Capscrew
36	1	1001-6112	Hex Hd Capscrew
37	8	1022-0108	Jam Nut
38	2	1022-0264	Jam Nut
39	1	1024-0512	Spring Pin
40	2	1025-0519	Solid Pin
41	6	1029-1031	Snap Ring
42	4	1009-0804	Flat Hd Mach. Screw
43	1*	1201-0116	Spring (10-80 psi)
43	*	1201-0117	Spring (0-100 psi)