



MODEL 6655 ELECTRONIC CONTROL HEAD

The Model 6655 Control Head is an electronic device that provides control for two main engines and steering gear. The two chrome-plated handles can be moved independently 75 degrees in either direction, and can be used to control fixed pitch gearbox driven propellers and engine speed. The two control handles can also be arranged to provide control over waterjets, CP propellers and any type of propulsion machinery as well as, of course, the engine speed.

Rotating the control on its horizontal plane will give precise control over the rudder. In order to make the system operative, the Kobelt Microprocessor 6535 for a main engine, and its associated actuators, is required. Depending on the need, it can also come equipped with a separate panel

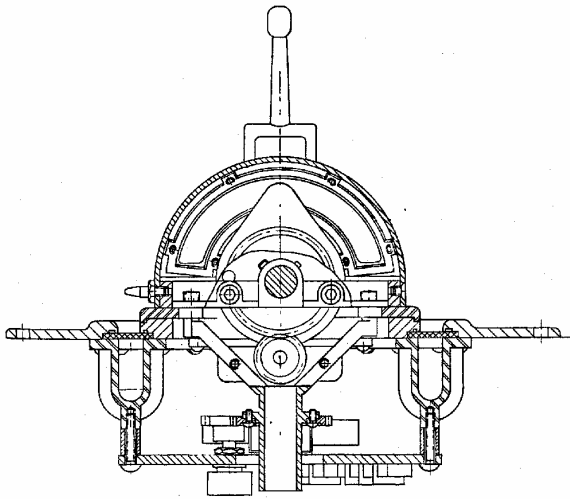
for station transfer, mode selection or an 8-point alarm system. For the steering gear portion, the model 7173-K and associated hydraulic components are required.

The control head can be used on virtually any type of vessel from 60 ft. to ocean-going vessels.

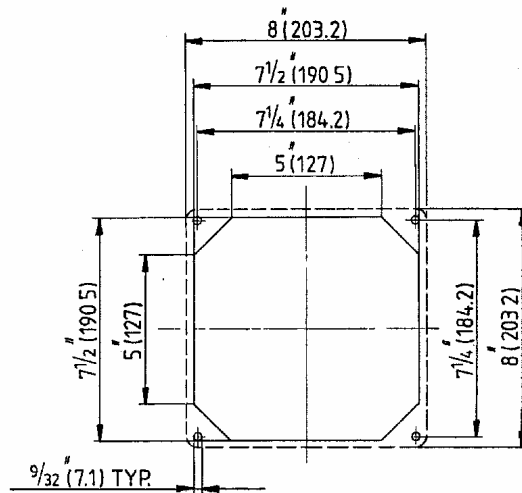
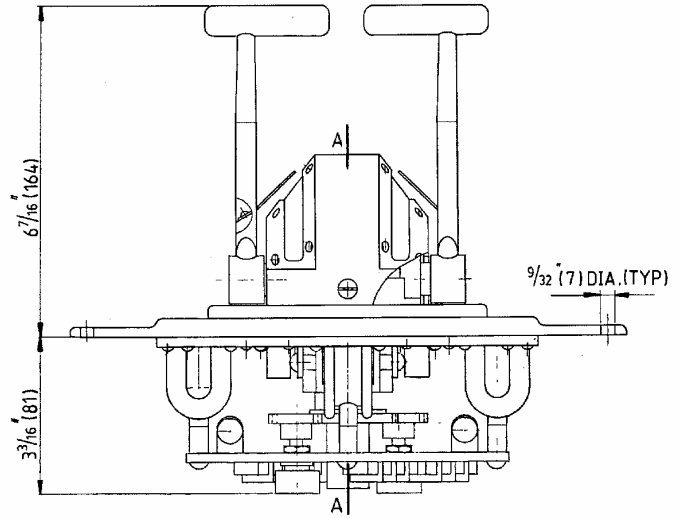
This control head is constructed in all bronze and stainless steel and is ideally suited for the marine environment. Our control heads incorporate the traditional look of sea-going vessels and yet are modern in appearance, very durable and rugged in construction.

Weight: 11 lb. (5 kg)

DIMENSIONS AND PARTS LIST MODEL 6655



SECTION A-A



Panel Cut-out Dimensions