

MODEL 6657 STEERING AND ENGINE CONTROLLER

This illuminated combination controller provides propulsion controls for clutch and throttle plus full follow-up steering rudder control, all comfortably operated by one hand. The 6657 is ideally suited for a navigation station with limited space and is a compact version of the Kobelt's 6655.



To complete the propulsion system you need the 6505-2000 selector panel when used with the Mighty Mariner system, or a 6507-S4 when used with the 6525 microprocessor.

To complete the Full Follow Up (FFU) steering system, a 7173-K steering amplifier, steering (directional control) solenoid valve and rudder feedback unit complete with potentiometers and limit switches, such as our 7174-A, are required. For systems with more than one station, a transfer box and station selector switches at each station are also required.

Each lever of the 6657 provides both clutch and throttle propulsion control. Push the lever forward 20 degrees to engage the forward gear. Push the lever another 60 degrees further for your throttle control from engine idle to maximum RPM. From the upright or neutral position, pull the lever back 20 degrees to engage the reverse gear. Pull the lever another 60 degrees for your full range engine throttle control.

The 6657 is available with up to two potentiometers for the steering system and is intended for use with electric over hydraulic steering systems for rudder angles up to 2 x 45 degrees. The controller (with the exception of electronic components) is constructed entirely of die cast bronze complemented by stainless steel hardware for longevity in a marine environment.

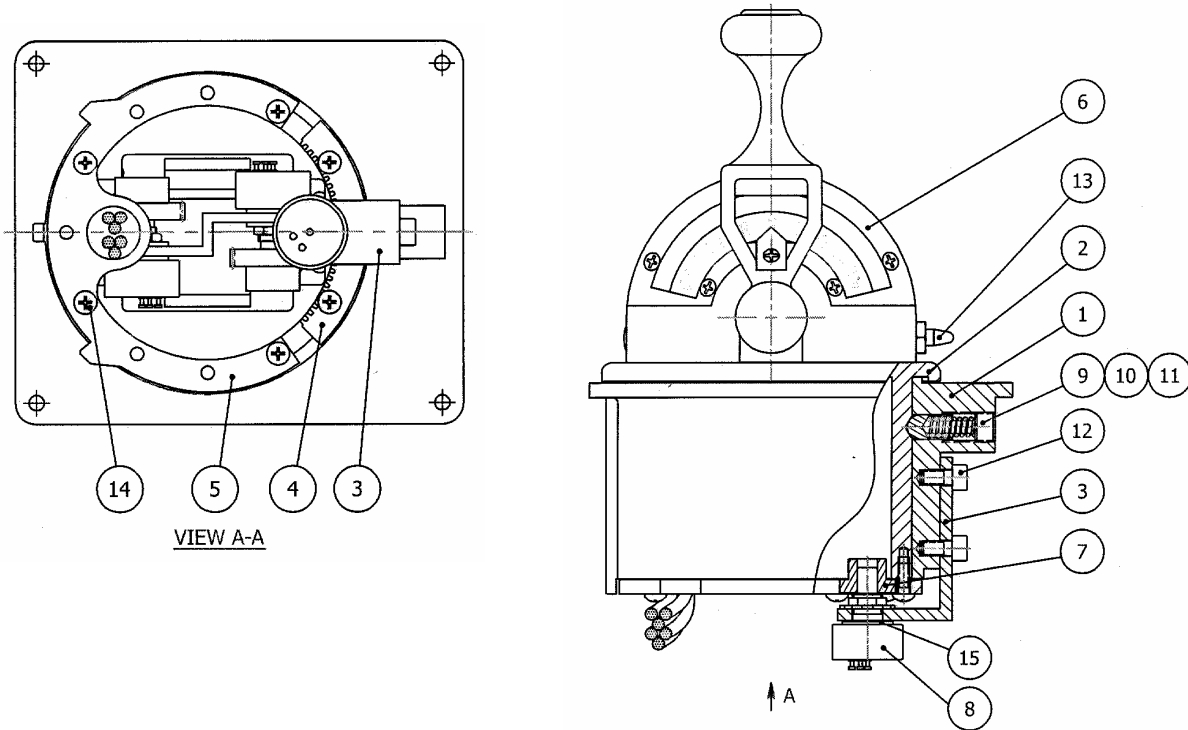
The position of the rudders is proportional to the position of the FFU controller. Returning the controller to midship will cause the steering gear to "FOLLOW UP" to the midship position and stay there until the next order signal is given.

CAUTION Before selecting FFU mode of steering control at a given station, align the steering lever with the position of the rudder. The controller must be within a few degrees of the rudder position before selecting FFU mode at that station. The helm order indicator and rudder angle indicator must match before selecting FFU mode control.

Net weight: 10 lbs. (4.3 Kg)

Base Dimensions: 4-1/2" x 5-3/8" (114 x 136 mm)

MODEL 6657



Item	Quantity	Part Number	Description
1	1	6657-0001	Outer Housing
2	1	6657-0002	Inner Housing
3	1	6657-0003	Potentiometer Bracket
4	1	6657-0004	Drive Gear Bracket
5	1	6657-0005	Bracket
6	1	6501-T	Dome Assembly
7	1	.YPB-3228	Gear
8	1	Pot-1	Potentiometer, 1K
9	1	2009-0011	Detent
10	1	1201-0062	Detent Spring
11	1	1016-1204	Set Screw
12	2	1022-0822	Socket head Cap Screw
13	1	6653-0018	Pointer
14	6	1012-0606	Pan Head Screw
15	1	7169-0015	Spacer



8238 – 129th Street, Surrey, B.C. Canada V3W 0A6
 Telephone: 604-572-3935, Fax: 604-590-8313

12/2008