



MODEL 7094DL 4" I.D. STEERING CYLINDER

Design pressure: 2000 p.s.i. (138 bar)

Weight: 152 lbs (69 kg) for the 24" stroke model. Add approximately 2.6 lb (1.2 kg) for each 1" increase in stroke.

The **7094DL** cylinder is designed for the boat owner who demands the utmost in performance and reliability.

The castings are all made in silicon bronze. The steel barrel is micro-honed. Piston rod is made of chromed alloy steel and tie rods are made of stainless steel. The spherical bearings on either end are built for strength and easy alignment and rarely require replacement. The piston seals are of polyurethane material.

The piston rod seal is "V" packing seal and is also provided with an adjusting stop nut for precise stroke and over-travel limiter.

Since these cylinders are only available in an unbalanced configuration, tandem cylinders are required for all installations.

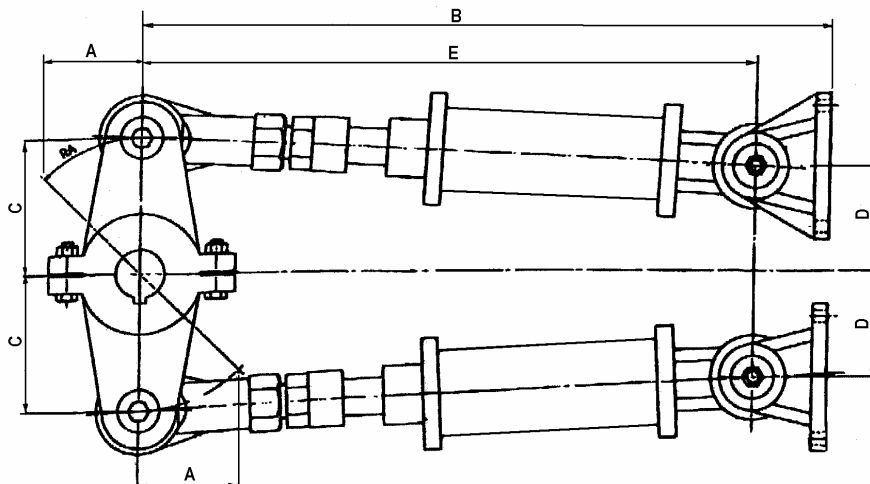
Rudder Angle (RA) = 35°

STROKE		TORQUE		DISPLACEMENT		A		B		C		D		E	
in.	mm	lb-ft	kg-m	in ³	cm ³	in.	mm	in.	mm	in	mm	in	mm	in	mm
12	305	31395	4341	264	4324	6	152	43.3	1099	10.5	266	9.5	242	38.5	978
16	406	41855	5787	352	5766	8	203	49.3	1251	14.0	354	12.7	322	44.5	1130
20	508	52315	7233	440	7207	10	254	55.3	1403	17.4	443	15.9	403	50.5	1283
24	610	62775	8679	528	8649	12	305	61.3	1556	20.9	531	19.0	483	56.5	1435
30	762	78460	10848	660	10811	15	381	70.3	1784	26.2	664	23.8	604	65.5	1664

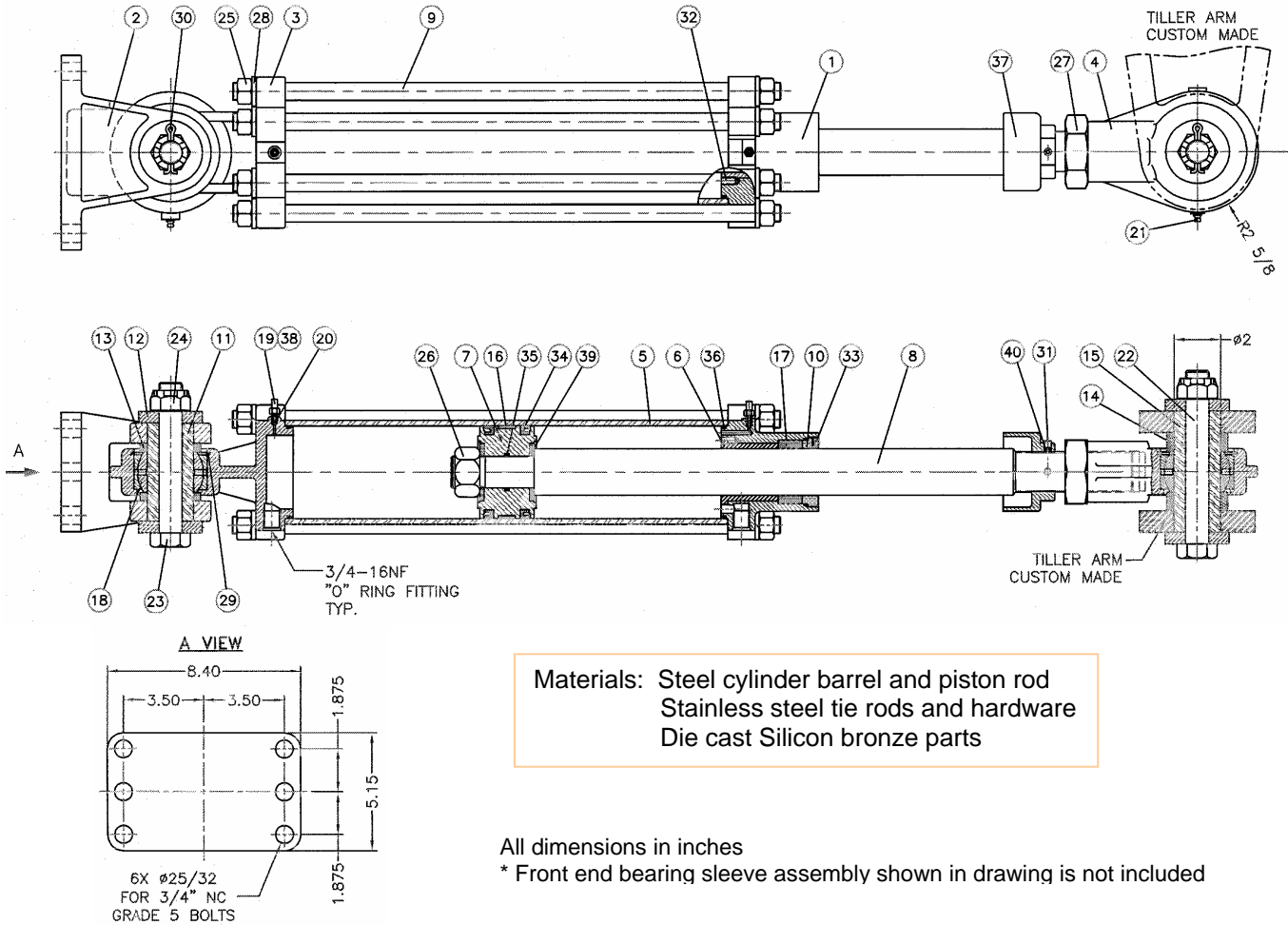
Rudder Angle (RA) = 45°

12	305	21975	3039	264	4324	6	152	43.3	1099	8.5	216	7.2	184	38.5	978
16	406	29300	4051	352	5766	8	203	49.3	1251	11.3	287	9.7	245	44.5	1130
20	508	36615	5063	440	7207	10	254	55.3	1403	14.1	359	12.1	307	50.5	1283
24	610	43935	6074	528	8649	12	305	61.3	1556	17.0	431	14.5	368	56.5	1435
30	762	54910	7592	660	10811	15	381	70.3	1784	21.2	539	18.1	460	65.5	1664

NOTE: 1. Torque and displacement are based on two cylinders at 2000 p.s.i.
2. All dimensions in the diagram below may change with different tiller and configuration.



DIMENSIONS AND PARTS LIST MODEL 7094DL



Materials: Steel cylinder barrel and piston rod
Stainless steel tie rods and hardware
Die cast Silicon bronze parts

All dimensions in inches
* Front end bearing sleeve assembly shown in drawing is not included

ITEM	QTY	PART NO.	DESCRIPTION	ITEM	QTY	PART NO.	DESCRIPTION
1	1	7094DL-0001	Front End Cap	21	2	1501-0301	Grease Nipple
2	1	7094D-0002	Foot	22*	1	1001-72120	Front Hex Bolt
3	1	7094D-0003	Rear End Cap	23	1	1001-72104	Rear Hex Bolt
4	1	7094DL-0004	Rod End	24*	2*	1022-0572	Castle Nut
5	1	7094D-0006	Tube	25	12	1022-0167	Hex Nut - tie rod
6	1	7094DL-0007	Bushing	26	1	1041-11138	Hex Nut
7	1	7094D-0008	Piston	27	1	1022-0280	Jam Nut - rod end
8	1	7094DL-0009	Piston Rod	28	12	1023-0318	Lock Washer
9	6	7094D-0010	Tie Rod	29	2	1029-3315	Retaining Ring
10	1	7094DL-0011	Packing Nut	30	2	1026-0832	Cotter Pin
11	1	7094D-0012	Rear Bearing Sleeve	31	2	1016-1204	Set Screw
12*	4*	7094D-0013	Sleeve Retainer	32	4	1016-1108	Set Screw
13	2	7094D-0014	Rear Spacer	33	1	1016-1004	Set Screw
14*	2	7094D-0037	Front Spacer	34	2	1102-2053	"U" Cup
15*	1	7094D-0038	Front Bearing Sleeve	35	1	1101-0220	"O" Ring
16	1	7094-0032	Wear Ring	36	2	1101-0240	"O" Ring
17	1	7094-0033	"V" Packing	37	1	7094DL-0005	Stop Nut
18	2	7094D-0036	Spherical Bearing	38	2	7094D-0015	Bleeder Block
19	2	7040-0011	Bleeder Screw	39	2	7094D-0016	Washer
20	2	1301-0005	SS. Ball	40	2	2542-0008	Friction pad

Data displayed are for information only and subject to change without notice