

## Model 7156 Rudder Stock Clamp

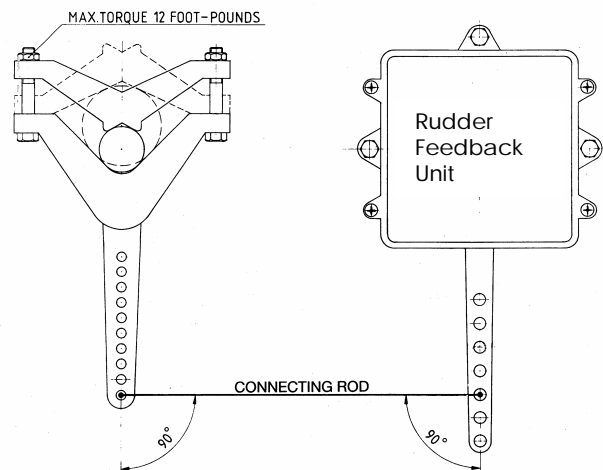
The prime purpose of the 7156 rudder stock clamp is to provide a mechanical feedback for Auto Pilots, Power Follow-ups and any electronic positioning of the rudder. It cannot be used as a replacement for a Tiller Arm.

This clamp can be used on rudder stocks from  $\frac{3}{4}$ " (19 mm) up to  $4\frac{1}{2}$ " (115 mm) in diameter.

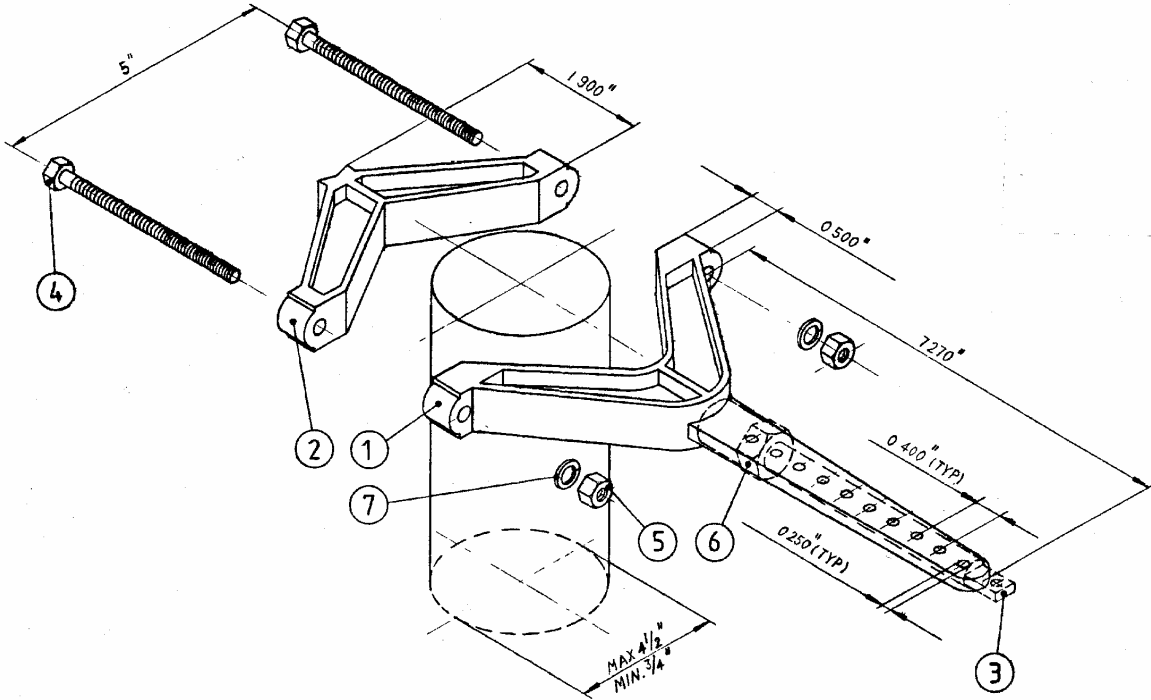
Two models are available. The FL unit (Fixed Lever) has a series of holes at  $\frac{3}{8}$ " (9.5 mm) intervals for connecting the feedback linkage. The AL unit (Adjustable Lever) is equipped with a threaded rod and a lock nut which can be infinitely adjusted for any lever length. Should the threaded rod come too long, it can be readily cut to provide a shorter stroke.



It is important that the axis of the connection hole is in line with the axis of the rudder stock when the linkage is installed. It is also very important that the linkage in the mid-position is square to the item controlled. Unequal travel will be obtained if this is not accomplished.



# MODEL 7156 Rudder Stock Clamp



ITEM	QTY	PART NUMBER	DESCRIPTION
1	1*	7156-0001	Clamp
1	1*	7156-0002	Clamp
2	1	7156-0003	Clamp
3	1	7156-0004	Screw
4	2**	1001-1144	Hex Bolt, full thread
5	2	1022-0111	Hex Nut
6	1*	1022-0264	Hex Nut
7	2	1023-0311	Lock Washer

\* Quantity varies with options

\*\* Length may vary