



## **MODEL 7171-SW FULL FOLLOW-UP CONTROL (STAR WHEEL TYPE)**

Like the Model 7171, the 7171-SW Control is a full follow-up rudder control. This model can be used as a main electronic control station and is ideally suited for high speed craft. When equipped with two potentiometers, it could be used for catamaran steering with split electronic rudder demand, allowing the rudders to move simultaneously and always remain synchronized. It can also be used for conventional craft with one potentiometer for rudder positioning. A second potentiometer could be used to show rudder demand. The star wheel can be equipped with push buttons or switches at the end of the grips for special applications.

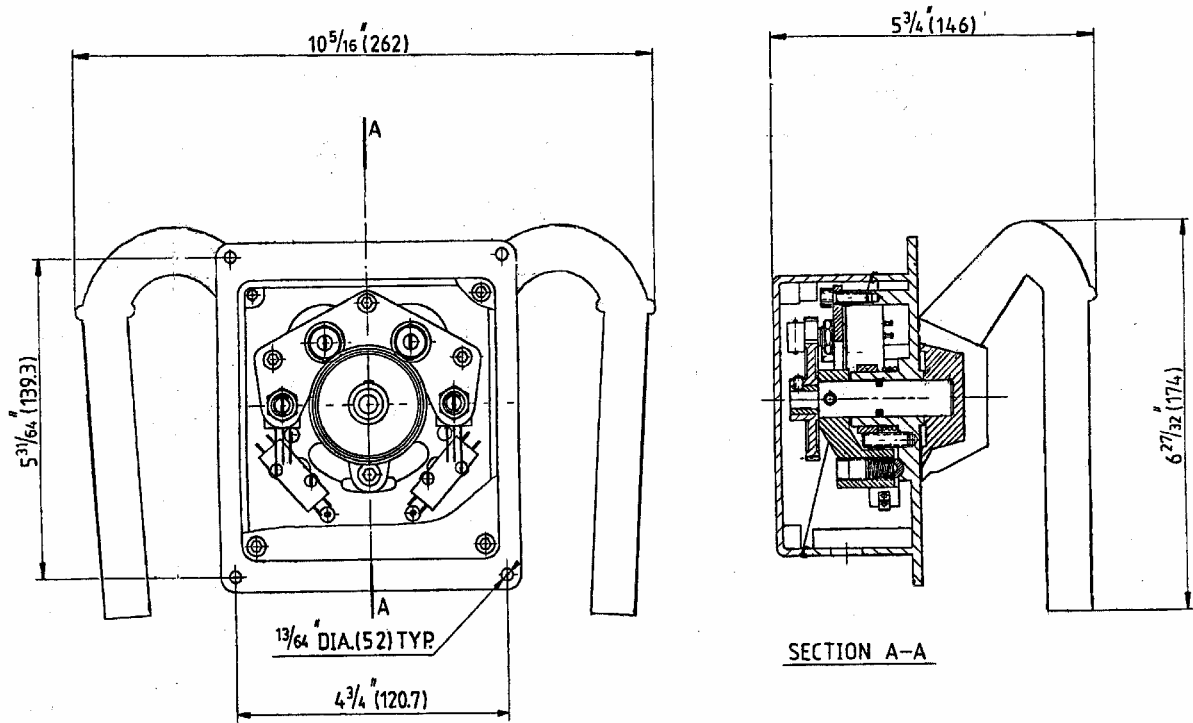
### Ordering Information:

- A 2 switches and 1 potentiometer
- B 2 switches and 2 potentiometers
- P 1 potentiometer

Regular potentiometer supplied with this unit is 1K ohm.

Approx. weight: 11 lb. (5 kg)

# MODEL 7171-SW



Dimensions in inches (mm)

## Wiring Diagram

